



## This Issue

- Workshop- Mac MacNamara.....Jan. 31<sup>st</sup>
- Workshop – Suzanne Cole.....Mar. 7<sup>th</sup>
- Workshop – Sandy Corbin.....April 4<sup>th</sup>
- WQ Officer & Chairman Reports
- Call for Entries
- Neighborly Guild Calendar
- WQ Member Articles

## Quarterly Meeting

**Saturday, February 1, 2020**

**Mike "Mac" McNamara**

"Mike McNamara - Quilts"

**St. Andrew's Lutheran Church,  
11555 National Blvd,  
Los Angeles, CA 90064.**

9:30am Social & Demos

10:00 Guild Business & Announcements

10:55am show & Tell

11:15am Speaker

12:15 Adjournment



## Up Coming Workshops & More



shutterstock - 81319225



Shutterstock

- Take the day off from all the news and come have fun, improv day with **Mike McNamara, Friday, January 31<sup>st</sup> 9:30 – 3:30 pm.** We will be meeting in the Community Room at the West Traffic Building, 4849 W. Venice Blvd. LA 90019 Email Pat Karasick to save a space, fill out registration and pay at the door \$50.00 cash or check made out to Westside Quilters. Contact Pat at: [Pk@afewgoodideas.com](mailto:Pk@afewgoodideas.com). Four spaces left.
- March 7, 2020 workshop with **Suzanne Cole** "Hawaiian Applique" by hand and machine
- WQ workshop with **Sandy Corbin** April 4, 2020 "My Basket Collection".
- Registration forms for classes and membership renewal can be downloaded from the Westside Quilters website.



*Valentine's day*  
**14 February**



# ***PRESIDENT'S MESSAGE***

Happy February

Lucky us... a New Year to celebrate and create.  
Our Program chairs have planned exciting workshops.  
Be sure to give yourself the gift of a class to start your year of quilting.

So much to learn, share and give.

Thanks to our hardworking Philanthropy committee, Nancy Kawahara, Virginia Marshall, and Lisa Drew for leading the way to our, Giving for Thanksgiving and January Sew - In.

Because of their leadership and your participation quilts were distributed just before the Christmas holiday all over Southern California.



A special thanks to our Westside Quilters Board members for your dedication WELL DONE.  
Looking forward to 2020.

Roberta Walley  
President Westside Quilters





# WESTSIDE QUILTERS

Westside Quilters presents a workshop with



**Suzanne Cole**  
**"Hawaiian Applique"**  
**Saturday, March 7, 2020**  
**9:30 am – 3:30 pm**

Sewing Arts Center  
3330 Pico Blvd. Santa Monica, CA

Workshop fee: \$50.00

**Suzanne Cole** - you all know her as manager at *Sewing Arts Center* will teach a Saturday workshop "Hawaiian Applique". Suzanne will present a few different ways to make these beautiful nature influence blocks: traditional needle turn by hand, freezer paper templates and by machine.

Suzanne Cole, will open the back room up for this class. There are 11 spaces available. Suzanne is putting together free kits of fabric, thread and a needle for us. There will be samples of what to do with your applique upon completion.

We will have light boxes available to trace our pattern onto the fabric We will all be doing the same applique for this class.

Please download the registration form at [www.WestsideQuiltersofLosAngeles.org](http://www.WestsideQuiltersofLosAngeles.org) Look for the form on the Home page of the website, scroll down until you locate it. Email Pat Karasick to save a space: [pk@afewgoodideas.com](mailto:pk@afewgoodideas.com)

Aloha,  
Pat

## **Suzanne Cole's Bio**

I have been quilting for 20+ years. I retired from working in the medical field 4 years ago and am now working fulltime doing what I love. Once I made my first quilt I was hooked. Teaching is my passion and therapy.

I love my beginning quilting classes. It is always so amazing to me helping new quilters picking fabrics and seeing the finished results. Fabrics I would never pick myself, but I have yet to see a finished quilt I didn't like. Just like me after my first quilt, the majority of students get hooked and want to make more.

Of course, there are the few who just need a quilt for the new baby in the family or a kid graduating. Having done it for 15 years I am constantly trying new techniques and making my own patterns. I have done piecing, applique (both machine and hand stitched), embroidery, sashiko, pillows and bags. Lately I have been doing paper piecing (both foundation and English paper piecing), as well as tiny piecing. My favorite thing, though, is Free motion longarm quilting and recently mastered programmed longarm quilting.



**Workshop with**

**Susanne Cole**

**Hawaiian Applique  
Saturday, March 7, 2020**

**Supply List**

- Small Pointy Sharp Scissors, Gingher 4" Embroidery or Equivalent
- Blue Wash Out Marker or Frixion Pen (disappears with heat)
- Fabric Shears
- Rotary Cutter
- Cutting Mat
- Rotary Cutting Ruler 6.5x12.5 or similar
- Applique Pins or Glass Head Pins
- Seam Ripper
- Mettler Cotton Thread 60 weight to match applique fabric
- Hand Sewing Needles
- Machine Needles 70 Sharps
- Mechanical Pencil
- Freezer Paper (will be provided)
- Pattern (will be provided)
- Light Box (will be provided)

**Fabric:**

10" Layer Cakes (or equal pieces for applique)  
1 yd Background fabric

Both Needle turned applique and Freezer Paper  
Templet will be demonstrated





# WESTSIDE QUILTERS



Westside Quilters presents a workshop with

**Sandy Corbin**  
**"My Basket Collection"**  
**Saturday, April 4, 2020**  
**9:30 am – 3:30 pm**

**The Community Room of the LAPD West Los Angeles Traffic Division,**  
4849 W. Venice Blvd.,  
LA, CA 90019

Workshop fee: TBD

Sandy Corbin's "My Basket Collection" is a delightful planned basket arrangement quilt, though they look random in design. Sandy has an easy, simple way to curve the handles in any shape. Keep it basic or go crazily creative with this pattern! Sandy says "Quilting has become my life's favorite passion. I love playing with colors, feeling the fabrics, and finding the joy in creating something fun. I get the most pleasure from making scrappy quilts. My favorite color is *black & white* polka dots! I love sharing my passion for quilting."

## **Bio**

I live in Laguna Hills, California with my husband Brad.

Like many quilters I started sewing in Jr. High, and by high school I was making my own clothes. I have always had a love for fabrics. I began making quilts in the 70's and started taking classes in the 80's. By the 90's I was obsessed with all things quilting. "Sandy's Designs" was founded in 2002 when I started creating patterns. I've been teaching classes since 2004 at various quilt stores. In 2016 I became a "Quilt In A Day" Certified Teacher.

Beach Cities Quilters Guild has been an important part of my quilting life. I've been a member for 23 years. In 2010 I was the quilt show chair for, "FantaSea of Quilts", and I co-chaired the 2016 quilt show. I also served as the 20th President of "Beach Cities Quilters guild".

It brings me great joy to share my experiences and all that I've learned with others who share my passion for quilting. My motto is "FUN & DONE".

Contact me anytime at: (949) 458-2969, or [sandycquilts@aol.com](mailto:sandycquilts@aol.com).



**Supply List: A workshop with Sandy Corbin.** April 4, 2020 . . . . .

**My Basket Collection 42½” x44½”**

This pattern has 16 baskets separated into four quadrants, A, B, C, & D.



**Fabric requirements: For the whole quilt are:**

- 8–10 fat quarters, or ¼yards, or mix of or, fat eights. Baskets and handles.  
*The green stripe handle needs to be a fat quarter or larger, it will be cut on the bias.*
- 2 yards.....Background and borders....If you are, using 2 different backgrounds,  
as in the sample, you need 1/2 yd of (flowers) and 1¾yds(mini dot).
- ¼ yd.....narrow contrasting border (use something similar or one of the same prints)
- ⅓ yd.....Binding (this does not have to match the border, that is a personal choice)
- 1 ¼ yds....Backing *do not bring to class*
- 50 x 50....Batting *do not bring to class*
- ½ yd.....Yo-Yo's assorted Greens (about 3 ¼" square)

→ **OR make the “¼ Quilt” layout.** You can make just one quadrant 21"x 24".

....THIS VIEW is quadrant “A”....with a few handle changes

You will need:

- 1 yd.....Background and borders
- 4 different 7” squares....Baskets (bring extra if you have it for more possibilities)
- 4 different 10” squares...Trim and handles
- 1 Fat Quarter.....Long handles
- ¼ yd.....2<sup>nd</sup> border (red contrast)
- 1/3 yd.....Binding
- 1 yd.....Backing *do not bring to class*
- 27 @ 3¼” sq.....YO-YO's (scraps to match)



**Supplies:**

1. “My Basket Collection” pattern by Sandy Corbin. ---She will bring them for purchase@ \$11.00each.
2. Matching thread to top-stitch the handles
3. An open toe foot is really nice, so that you can see best for top-stitching
4. Cutting mat (at least 18”x 18” or bigger is better) and Rotary cutter
5. 6”x 12” Ruler, and a 6”x24” Ruler. Also, a 12” Square Ruler is nice if you already have one.
6. Sewing machine with all the supplies; scissors, seam ripper, pins, thread, etc.
7. Clover Yo-Yo maker size small *optional*
8. Pencil and a few color pencils
9. Mini iron and pad if you have one
10. 16 safety pins (any size)

Please feel free to call me with any questions about the class. Sandy @ 949-637-5450





# PHILANTHROPY

Many thanks for your donated quilts--the Lattice Scrap quilts keep rolling in! Here's the latest 3 quilts completed this month (see below). Keep them coming! We will continue to donate them to **Upward Bound** for their Santa Monica and Culver City programs and **A Child's Dream**.

As a reminder, **Dollies Making a Difference** is closing their program this year. Lisa has distributed the quilts we collected last year.

We received a warm thank you note from the **Westside Food Bank** for our donation of \$650 from funds raised mainly from our Fall fabric sale. Your generosity helped local families in need during this past holiday season.

Finally, another shout-out to Julie Marquez, owner of **Sewing Arts Center** in Santa Monica, who made our philanthropy quilt project and fabric sale so successful with her generous donation of bolts and bolts of beautiful fabric. Please thank her the next time you stop in at **Sewing Arts Center!**

See you soon!  
Virginia Marshall, Lisa Drew, and Nancy Kawahara  
Philanthropy Co-chairs



Kathryn Pellman, Feb.1  
Jean Donelan, Feb. 3  
Debbie Nussbaum, Feb. 7  
Carol Kapuscinski, Feb. 21



# Leadership.....

## Circles

Quilters are drawn to shapes: rectangles, squares, triangles, and, of course, circles. There is something about the swirl and flow of circles that is especially appealing to me, be it in the design on fabric or in the design of a quilt. I started to wonder what it is that draws me to circles.

One way of thinking about circles is in terms of time. We tend to think of time as linear, going from point A to point B. We start a quilt, and then we finish it (usually...). We build our skills in a linear fashion, first learning one thing and then we learn a new technique and move forward. But the writer Austin Kleon points out that “the creative life is *not* linear...It’s more like a loop, or a spiral, in which you keep coming back to a new starting point after every project. No matter how successful you get, no matter what level of achievement you reach, you will never really ‘arrive’.” Each quilt is unique, and with each quilt we circle back to start anew. Each quilt is a new opportunity for creative expression.

Just the other day I read something else about circles. The writer Deena Metzger said, “Stories move in circles. They don’t go in straight lines. So it helps if you listen in circles. There are stories inside stories and stories between stories, and finding your way through them is as easy and as hard as finding your way home. And part of the finding is the getting lost. And when you’re lost, you start to look around and listen.”

Next time you are playing with fabric and thinking about a new project, remember that the story in the fabric moves in circles. Don’t be afraid to take the time to get lost in the fabric and in the story it is trying to tell you. Listen to what it says, dare to follow your instincts and your creative sense, dare to experiment and have fun.

And if you don’t like the result, you can always circle back and start again.

Barbara Marom-Pollack  
Vice President





# TREASURER

Karynn Dittmar, Treasurer

<b>OPENING BALANCE AS OF 6/1/19</b>		<b>8439.78</b>
<b>INCOME</b>		
Membership Dues / Donations	3300.00	
Workshop Fees	3870.00	
Bank Adjustment	0.00	
Guest Fees	0.00	
Fabric Sale Fundraiser	625.25	
Amazon	52.46	
<b>TOTAL INCOME</b>		<b>7847.71</b>
<b>EXPENSES</b>		
Workshop Expense	4612.92	
General Meeting Expense	1909.10	
Charitable Contributions	650.00	
Administrative Expenses	404.43	
Mileage reimbursement	262.00	
SCCQG Insurance	290.50	
Website	220.25	
PO Box Rental	154.00	
Philanthropy / Ed. Expense	161.62	
Printing / Promotion / Admin.	32.07	
Square Up Fees	38.86	
Government Fees	0.00	
<b>TOTAL EXPENSE</b>		<b>8735.75</b>
<b>NET INCOME</b>		<b>-888.04</b>
<b>CLOSING BALANCE as of 1/28/20</b>		<b>7551.74</b>



## MEMBERSHIP

Do you have a friend interested in Quilting and not a member of WQ? The WQ membership fee for the remainder of our fiscal year has been reduced to only \$35.00, that covers new members through the end of May 2020.

Luann Jaffe  
Membership

*Note:* We have a few members who would still like to be in a mini group. If any group is looking for a member or two please let me know. These groups can be productive or social or both and they help keep us all together.

If you have any questions regarding membership please contact me either through the web or [luannjaffe42@gmail.com](mailto:luannjaffe42@gmail.com)



## WEBSITE:

The Westside Quilters website at [www.westsidequilterslosangeles.org](http://www.westsidequilterslosangeles.org) has been updated with photos of the recent WQ Sew-In but we'd love to have more. If anyone has further photos from that event please send them to me at [westsidequilters@yahoo.com](mailto:westsidequilters@yahoo.com).

On the subject of social media... Just in case you aren't aware... Westside Quilters has an active social media presence both on Facebook and Instagram. If you have not already done so, please just search Facebook for Westside Quilters and "Like" our page. The same with Instagram... find us and "follow". You will find that we share a lot of information - not just about our own members news and WQ events, but news involving the general quilting community as well as tips and tricks that we hope will improve your skills and enjoyment of our mutual passion.

We all know that in today's world social media is a very important and useful way to get a message out. We want the message of Westside Quilters to get out to our potential audience. We want to grow! So please like our page and share our posts to your friends. On "Insta" please repost. And by all means comment! We love the feedback. And lastly, if you find items on the web or Facebook that you think would be interesting to our social media audience, send them to me. Other voices are always welcome!

Sally Wright, Website Manager

--

Sally Gould Wright, Textile Artist Los Angeles, CA 310-471-6034 [Sally@sallywrightquilts.com](mailto:Sally@sallywrightquilts.com)  
[www.sallywrightquilts.com](http://www.sallywrightquilts.com)



## Easy Money for WQ:



<https://smile.amazon.com/ch/27-3145733>

Support Westside Quilters when you shop on Amazon by clicking on this link. Please make sure you are logged into your smile account. Amazon Smile is a free program and you'll find the same low prices, vast selection and convenient shipping options as Amazon.com and Amazon will make a donation to Westside Quilters

If you have any problems, please contact Karynn Dittmar, Treasurer.

## WORKSHOP REGISTRATION

First, please email your intent to attend a workshop to: [Programs@WestsideQuiltersLosAngeles.org](mailto:Programs@WestsideQuiltersLosAngeles.org) at the **WQ website**, choose *Calendar* and scroll down to individual workshops. See the link to the Workshop Registration Form (which you can fill in on-line and then print) and the supply list. **See the workshop no-refund policy (substitutions allowed) shown on the Workshop Registration Form.**

WQ will hold your space at the workshop for 14 days to allow time to mail Registration Form and payment to the WQ post office box. For last-minute registrations, contact the Program Chair ASAP. **Credit cards/debit cards now accepted.** Non-members pay a \$15.00 surcharge. Supply lists for all classes can be found on the Calendar page at [www.WestsideQuiltersLosAngeles.org](http://www.WestsideQuiltersLosAngeles.org). **The class sessions are from 9:30am to 3:30pm.**



©CORREX18 - iStockphoto

shutterstock - 81319225



## ***Calls for Entry, February 2020***

For some great information from a veteran on how to get your work shown see this blog entry from Sue Bleiweiss <https://suebleiweiss.blog/2018/06/14/getting-your-work-out-there/>

I also recommend this blog post from Lyric Kinard on how to choose venues to display your work - <https://lyrickinard.com/2019/05/showing-your-work-choosing-venues/> In fact, there is a whole series of blog posts on getting your work out there that is well worth your time.

Here are some suggestions for quilt entry photography from International Quilt Festival.  
[PHOTOGRAPHING YOUR QUILT FOR SUBMISSION](#)

Continuing our notifications for ways to display your quilts and textile pieces to a wider audience... Entering shows is not difficult, but to begin here are a few guidelines:

- Always make sure you read everything in the call including the calendar, requirements, rules, etc. Especially the rules! Will save headaches and disappointment later on.
- Keep a record on your entries so you won't be caught with a quilt needing to go two places at once. Having to remove a quilt from a show or exhibit because you misread the exhibition dates is a no-no. Ask me how I know...
- Having a great photo of your quilt - straight on, in focus, not on a bed or held up showing hands and feet, super important. There is lots of great info on quilt photography on line. Google!
- Don't be intimidated or depressed by a rejection! There are lots of different reasons why a quilt doesn't fit into a specific show. It is usually not because your quilt is bad!

The calls below are just a sample of the many opportunities out there. For more search "Fiber Art Calls for Entry" or "Quilt Calls for Entry"

**Looking ahead to the spring here are some opportunities to show your work at the returning Long Beach Quilt Festival <http://quilts.com/enter-a-quilt.html> July 9 – 11, 2020**

### **MOVIES AND MUSICALS: HOORAY FOR HOLLYWOOD!**

Registration will open early Spring 2020

Hollywood's rich artistic history has inspired moviegoers and fed their fantasies ever since the Silent Era. And everyone seems to have their own list of favorite films, actors, actresses, and directors. Quilts submitted for this exhibit should be inspired by those celluloid dreams – and the people who helped make them come to life across the decades.

### **ART DECO INSPIRED QUILTS**

Registration will open early Spring 2020

Inspired by geometric designs, streamlined forms, and sometimes offbeat colors, the Art Deco movement was stylish, influential, and omnipresent from 1925 through the 1940s. Art Deco was reflected in paintings, crafts, fine arts, and even architecture. Quilts submitted for this exhibit should be inspired by this much-loved style.

### **ART NOUVEAU – CRAFT AS ART**

Registration will open early Spring 2020

From the 1880s until World War I, western Europe and the United States witnessed the development and ascent of the Art Nouveau style. Taking inspiration from the unruly aspects of the natural world, Art Nouveau influenced art and architecture, the applied arts, graphic work, and illustration. Some of its best-known practitioners include Toulouse-Lautrec, Tiffany & Company, Alphonse Mucha, and William Morris. Quilts submitted for this exhibit should reflect Art Nouveau themes and style.

### **BEST OF THE WEST COAST GUILDS: AWARD-WINNING TRADITIONAL QUILTS**

Registration will open early Spring 2020

The west coast of the United States is home to scores of guilds and groups where members meet to share friendship, experiences, and create new quilts. This exhibit features some of the best traditional work done by quilters of all styles – appliquéd, pieced, wholecloth – and skill levels. Entrants should have previously won an award in a guild competition/show. Quilts submitted for this exhibit should have been completed in the past five years or less. \*WQ does not sponsor a quilt show, but a lot of you belong to a number of guilds that do\*



## **QUILTING AS THERAPY**

*Registration will open early Spring 2020*

Art Therapy uses the creative process – and works of art created during a patient's therapy – to help those in treatment develop self-awareness, explore emotions, address unresolved emotional conflicts, improve social skills, and raise self-esteem. Quilts submitted for this exhibit should stem from the quilter's own therapeutic journey or practices in their own lives.

**Here are the Calls for international Quilt Festival Houston 2020. They have not opened yet, but you can get a start! <http://www.quilts.com/enter-a-quilt.html>. Next month we'll have dates and deadlines.**

## **FINE CHINA**

Entries are quilts that are based on china patterns or traditional quilt patterns that are associated with china or crystal. "Fine" china was once the top item on every bride-to-be's wish list. Autumn, Blue Fluted Half Lace, Wedgewood Jasperware, Wild Strawberry, and Willow Blue are some of the most popular China Patterns.

- All styles traditional, modern, and art are acceptable for this quilt call.
- Limit three (3) entries per person.
- Each work must measure at least 49 inches (130 cm) on each side.
- The quilt can be NO LARGER than 86 inches (218.44 cm) ON A SIDE.
- The participating works must be available for two years, from June 2020 through November 2022.

## **FINE FEATHERED QUILTS**

A selection of Feathered Star and Princess Feather quilts will make a powerful statement as an exhibit at International Quilt Festival, Houston and as a book whose profit will be donated to the Texas Quilt Museum.

We are interested in sharing antique, or modern, newly made, inherited, bought, etc., with any techniques—piecing, appliqué, embroidery, photo transfer, wholecloth and/or manipulated fabric, etc.

- There are two categories: Yesteryear – quilts made prior to 1930 and Today – quilts made in 1930 and after.
- Limit five (5) entries per person or group.
- Each work must measure at least 50 inches (130 cm) on each side.
- The quilt cannot be larger than 86 inches (218.44 cm) ON A SIDE.
- We would like the participating works to be available for three years of travel, from August 2020 through August 2023.

## **HANDS ALL AROUND**

Artists from all around the world incorporate influences from their own cultures into the design and technique of their art quilts.

- Limit two (2) entries per person.
- Quilts must be a minimum of 36" (91 cm) wide and maximum of 108" (274 cm) wide.
- No more than 90" (228 cm) in length.
- Made between January 2017 and February 2020.
- The participating works must be available for two years, from June 2020 through September 2020.

## **HARRY POTTER QUILTS**

We love Harry Potter! If you do too, why not enjoy one of the free Harry Potter-themed quilt patterns available online or use your magical imagination and submit a quilt following the below rules. These quilts should feature characters, themes, or elements from the world of Harry Potter books and movies. These are to make and enjoy and show, not to sell, out of respect of JK Rowling's creativity and intellectual rights.

All styles traditional, modern, and art are acceptable for this quilt call.

- Limit three (3) entries per person.
- Quilts must have been made between January 2017- March 2020.
- Each work must measure at least 44 inches (130 cm) on each side.
- The quilt can be NO LARGER than 86 inches (218.44 cm) ON A SIDE.
- The participating works must be available for two years, from June 2020 through September 2022.

## **HISTORY AND READING QUILTS**

The quilts for this call should reflect history and/or reading instruction.

Quilt artists are encouraged to illustrate their History or Reading (book) quilt, in its simplicity and/or its complexity in answer to this call.

The selected pieces will not only feature the quilt art, but hopefully open a lively discussion on the amazing world of history, or an event in history, and reading (books).

- All styles traditional, modern, and art are acceptable for this quilt call.
- Limit three (3) entries per person.
- Each work must measure at least 50 inches (130 cm) on each side.
- The quilt can be NO LARGER than 86 inches (218.44 cm) ON A SIDE.
- The participating works must be available for two years, from June 2020 through September 2022.

## **IN FULL BLOOM**

Just as quilters create beautiful pieces of art with fabric, florists and gardeners cultivate works of beauty from the soil.

- All styles traditional, modern, and art are acceptable for this quilt call.
- Limit two (2) entries per person.
- Quilts must be a minimum of 36" x 36".
- New for 2020. No more than 90" (228 cm) in length.
- Made between January 2017 and February 2020.
- The participating works must be available for two years, from May 2020 through September 2022.

## **IN THE AMERICAN TRADITION**

This exhibit features recently-made quilts that harken back to the time of traditional blocks, styles, and techniques as their design source.

We are looking for both contemporary interpretations and traditional quilts, either by hand or machine, appliquéd, pieced, or wholecloth.

- Limit two (2) entries per person.
- Each work must measure at least 50 inches (130 cm) on each side.
- Width and length not to exceed 108".
- The participating works must be available for two years, from June 2020 through September 2022.

## **LANDSCAPE QUILTS**

From valleys and volcanoes, and mountains to monuments, landscapes often inspire artists, including many in the quilt world.

- All styles traditional, modern, and art are acceptable for this quilt call.
- Limit two (2) entries per person.
- Quilts must be a minimum of 36" x 36".
- New for 2020. No more than 90" (228 cm) in length.
- Made between January 2017 and February 2020.
- The participating works must be available for two years, from May 2020 through September 2022.

## **THE MATH AND SCIENCE OF QUILTS**

In high school and college, most of us take math and science courses because they are a basic requirement and we like to think we won't need it or use it. As quilters, we use both constantly in making our quilts without consciously thinking about it.

The fibers we work with (the science) frame the entire process. We use math to determine the size and shape of the quilt, and the pieces.

- All styles traditional, modern, and art are acceptable for this quilt call.
- Limit three (3) entries per person.
- Each work must measure at least 50 inches (130 cm) on each side.
- The quilt can be NO LARGER than 86 inches (218.44 cm) ON A SIDE.
- The participating works must be available for two years, from June 2020 through September 2022.

## QUILTED COMICS AND SCI-FI 2020

Theme: Entries are quilts on the themes of comic books, science fiction, fantasy, and pop culture. Did you grow up watching "Batman," "Superman," or "Star Trek?" Love the Avengers or Star Wars movies? Dug into the Harry Potter books? Are you playing your children's video games when they are at school? Now's your chance to create a quilt that portrays your love of super heroes, villains, fantasy, comic book, or anime characters to be on display at the International Quilt Festival 2020.

- All types of techniques are acceptable.
- You may enter up to three (3) quilts per person.
- Each work must measure at least 40 inches (130 cm) on each side. The quilt cannot be larger than 86 inches (218.44 cm) ON A SIDE.
- Quilts submitted for this exhibit should have been completed in the past five years or less.

## SCHOOLHOUSE QUILTS

The Schoolhouse block has been a favorite of traditional quilters for over a century. The quilt block has been known by several names including Old Kentucky Home and Old Folks Home. There are many versions of the block design available. Whether you decide to use the traditional design or a current interpretation, we want to see it.

- All styles traditional, modern, and art are acceptable for this quilt call.
- Limit three (3) entries per person.
- Each work must measure at least 50 inches (130 cm) on each side.
- The quilt can be NO LARGER than 86 inches (218.44 cm) ON A SIDE.
- The participating works must be available for two years, from June 2020 through September 2022.

## TACTILE ARCHITECTURE™

Buildings have a long history of inspiring the creative designs of quilters. In the 19th century, American quilters developed classic architectural patterns such as Log Cabin, Schoolhouse, and Brick Wall.

- All styles traditional, modern, and art are acceptable for this quilt call.
- Limit two (2) entries per person.
- Quilts must be a minimum of 36" x 36".
- New for 2020. No more than 90" (228 cm) in length.
- Made between January 2017 and February 2020.
- The participating works must be available for two years, from May 2020 through September 2022.

These are regular Quilt Festival special exhibits. The info and deadlines for the international Quilt Association judged show - World of Beauty - has not yet been announced, Hopefully we'll have it next month,

Questions? Contact Sally Wright at [sally@sallywrightquilts.com](mailto:sally@sallywrightquilts.com)







## ***A NEIGHBORLY GUILD CALENDAR***

<b>February 2020</b>	
January 31 & February 1 <b>Westside Quilters</b> <a href="http://www.WestsideQuiltersLosAngeles.org">www.WestsideQuiltersLosAngeles.org</a>	<b>Mike "Mac" McNamara</b> Program: Mike McNamara Quilts Workshop: "Techniques: A Day of Making Fabric"
February 5 Santa Monica Quilt Guild <a href="http://www.santamonicaquiltguild.org">www.santamonicaquiltguild.org</a>	<u>Ron Appel</u>
February 10 LA Modern Quilt Guild <a href="http://www.lamqg.blogspot.com">www.lamqg.blogspot.com</a>	<u>Meeting</u> - 2 <sup>nd</sup> Monday of the month
February 12 Simi Valley Quilt Guild <a href="http://www.simivalleyquiltguild.org">www.simivalleyquiltguild.org</a>	<u>Arlene Arnold</u> Program: The Journey: Kentucky to California 1864"
February 12 Glendale Quilt Guild <a href="http://www.glendalequiltingguild.org">www.glendalequiltingguild.org</a>	<u>Karen Brow-Meier:</u> Program: The Science of Exceptional Quilts Workshop: Toad Remote
February 12 Orange County Quilters Guild <a href="http://www.orangecountyquiltersguild.com">www.orangecountyquiltersguild.com</a>	Philanthropy Workshop:
February 15 - 16 South Bay Quilters Guild <a href="http://www.southbayquiltersguild.org">www.southbayquiltersguild.org</a>	2020 Quilt Show
February 16 African American Quilters of Los Angeles <a href="http://www.easysite.com/aaqla">www.easysite.com/aaqla</a>	<u>Meeting</u> – third Sunday of the month
<b>March 2020</b>	
March 4 Santa Monica Quilt Guild <a href="http://www.santamonicaquiltguild.org">www.santamonicaquiltguild.org</a>	<u>Leah Zieber</u> Workshop:
March 7 <b>Westside Quilters</b> <a href="http://www.WestsideQuiltersLosAngeles.org">www.WestsideQuiltersLosAngeles.org</a>	<b>Suzanne Cole</b> <b>Workshop: Hawaiian Applique</b>
March 9 LA Modern Quilt Guild <a href="http://www.lamqg.blogspot.com">www.lamqg.blogspot.com</a>	<u>Meeting</u> - 2 <sup>nd</sup> Monday of the month
March 11 Simi Valley Quilt Guild <a href="http://www.simivalleyquiltguild.org">www.simivalleyquiltguild.org</a>	<u>Meeting</u> - 2 <sup>nd</sup> Wednesday of the month
March 15 African American Quilters of Los Angeles <a href="http://www.easysit.com/aaqla">www.easysit.com/aaqla</a>	<u>Meeting</u> 3 <sup>rd</sup> Sunday of every month
March 18 South Bay Quilters Guild <a href="http://www.southbayquiltersguild.org">www.southbayquiltersguild.org</a>	<u>Tiffany Hayes</u> Workshop: Calliope
March 28 - 29 Glendale Quilt Guild <a href="http://www.glendalequiltguild.org">www.glendalequiltguild.org</a>	<u>Glendale Quilt Show</u>



## ***OUT AND ABOUT***

- ✂ **Craft in America Center** in Los Angeles, [Quilts: 4 Directions](#), running through March 21, 2020.  
Open Tuesday – Saturday 12-6pm 8415 West Third Street, Los Angeles, CA 90048  
The exhibition highlights artists featured in the PBS series [Craft in America](#): Michael Cummings, Judith Content, Victoria Findlay-Wolfe, and Susan Hudson
- ✂ **Craft in America** Feb. 6, 2020 ‘Reading Craft Book Discussion Quilts in Black History’ details [www.craftinamerica.org](http://www.craftinamerica.org)
- ✂ **Craft in America Center** in Los Angeles, March 7 (Sat) 4 – 5:30 pm Quilt Share Live! With Joe Cunningham & Julie Silber.
- ✂ **Valley Quilters Guild 40th Annual Quilt Show February 7-8, 2020**  
Valley-Wide Recreation Center 901 West Esplanade, San Jacinto, CA 92583 Contact: (951) 204-8271
- ✂ **South Bay Quilters Guild Show, Ruby Celebration** Saturday & Sunday, **February 14 -15, 2020**  
(10 AM-4 PM) Torrance Cultural Center 3330 Civic Center Drive Torrance, CA 90503
- ✂ **March 14-15, 2020 Friendship Square Quilt Guild Quilt Show: “Alive with Color”**  
(3/14 10AM-5 PM 3/15 10AM-4PM) La Habra Community Center 101 W. La Habra Blvd, La Habra, CA
- ✂ **March 28-29, 2020 Glendale Quilt Guild Quilt Show 2020** (Sat. 10AM – 5PM - Sun. 10AM – 4PM)  
Glendale Civic Auditorium 1401 N. Verdugo Road, Glendale, CA 91208 [glendalequiltguild.org](http://glendalequiltguild.org)

**See the Speaker Calendar of the Southern California Council of Quilt Guilds for additional events.** Go to [www.sccqg.org](http://www.sccqg.org) scroll down to the bottom of the homepage and click on the box “Speakers” and see other SCCQG guilds and speakers into 2020.



## ***A few pictures from the Jan. 4, 2020 WQ Sew-In:***





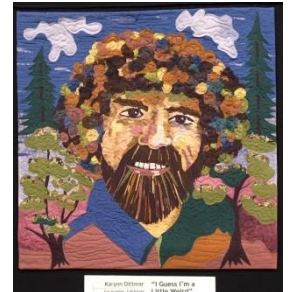
# WQ Member Articles and News:

## Road to California

Hope many of you made it to this years Road to California Quilt Show, there were so many amazing quilts this year.

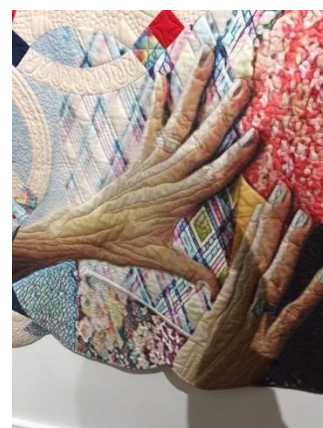
Westside Quilters was well represented at Road to California this week - in the Judged Show, in the Cherrywood Bob Ross Challenge and in the SCCQG exhibit honoring Road's 25th Anniversary. Our President Roberta Walley and Sally Wright both quilts in the Judged Show. Karynn Limbach Dittmar, Debbie Nussbaum, Sally Wright, Stephania Bommarito, Bobbie Blake, and Aileen Cooke were represented in the Southern California Council of Quilt Guilds exhibit honoring the 25th anniversary of Road to California. Quilts by Karynn Dittmar and Sally Wright were in the Bob Ross Cherrywood Challenge. Proud of you all!

Sally Gould Wright





**Craft in America Center's Los Angeles** January 11<sup>th</sup> opening for the exhibition "Quilts: 4 Directions" was standing room only for quilters who turned out to hear from speakers Judith Content, Victoria Findley-Wolf, and Susan Hudson. I counted at least 7 Westside Quilters in the crowd. Here are a few pictures from the night. The Quilt exhibit continues through March 21<sup>st</sup>.



# Quilters get Around

*Article by Pat Karasick*

My husband has always wanted to go to Cuba. So, when an opportunity came up to attend the International Jazz Festival in Havana, Cuba, off we went signing up with a very small tour company., Cuba 360. I speak LAUSD Spanish but was a little insecure about just being there on our own. We had two days in Trinidad, where time stopped in 1850. We had amazing coffee. Visited a disco set inside a cave before heading back to Havana for the Festival. Every night offered multiple choices in venues and bands.

I didn't see much quilting. This woman had these yoyos put together. There were amazing textiles, especially tablecloths outside an old sugar mill in the Valle de los Ingenios. This was the area that produced the most sugar cane before the War of Independence. The area is incredibly beautiful.

The Jazz Festival was held in old theaters. This tile "rug" was in the bathroom of the Teatro America. You could visualize how grand it had all been before the Revolution. Unfortunately, all a little faded now. But, all over the city progress was being made on restoring old buildings. New restaurants being opened. People that I talked to were excited that I came from Los Angeles to visit. I did not experience the anti-American feeling that I had feared would exist.

I went in the People to People category. I handed out school supplies to children. I wish I had brought more, and next time will bring more bars of soap to hand out. I am grateful to be home, free to express my opinions, have running water, enough food to eat, and fabric to make quilts.



***Quilting ideas from  
Havana, Cuba***





**Editor's Note:**

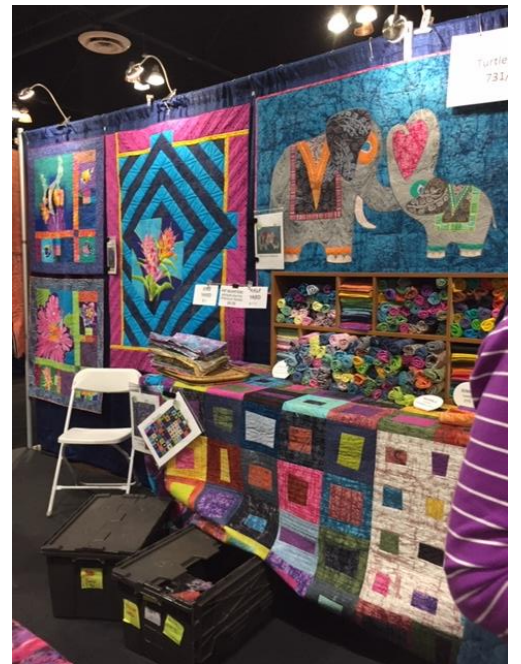
I love going to Road to California! It's a feast for the eyes and inspiration for the soul. This year I thought the workmanship was tip top perfection married with creativity, leaving me wanting to learn more skills. All the big winners were so deserving, in my humble opinion.

Vendors! Oh vendors, so many of them all in one place, my heart skips a beat! There were things that I specifically was looking for, as well as, enticing quilting stuff that you never knew existed. And, Fat Quarters from almost every continent!

Turtle Hand Batik, owned by Tina Hilton was a new vendor to Road2CA this year. They carry uniquely beautiful, individually crafted small batch batiks that are made with pride by artisan families in home-based workshops in Malaysia. I hope to use the many fat quarters that I purchased in my own colorful creation. I look forward to shopping at Tina's Turtle Head Batiks again next year. Check out her website: [turtlehand.com](http://turtlehand.com)



Happy Valentine's Day and Happy Stitching,  
Debbie Nussbaum  
Newsletter Editor





## Westside Quilters Executive Board Meeting, January 18, 2020

**President:** Roberta opened the meeting at 10:00 and welcomed everyone on the Board and congratulated all on a great year of programs and meetings. WQ's Philanthropy Day in November was a success with 25 quilts collected that day and 12 more in the following days. The Board agreed that this year's quilt pattern looked great in any combination of fabrics.

December's Holiday Tea was a cozy group with a lot of camaraderie and welcoming attitude (and good food). The annual Sew-in was on January 4 and everyone enjoyed themselves quilting, binding, working on special projects and knitting. There was a little bit of excitement in the afternoon when another group came in, but all was successfully worked out.

The next workshop is "Techniques: A Day of Making Fabric" with Mac McNamara on Friday, January 31, and he will be the featured speaker at the Quarterly meeting the next day, February 1. The meeting will be at St. Andrew's Lutheran Church.

**Vice-President:** Barbara led a discussion about the upcoming election of new officers in May. Volunteers are encouraged to contact her if interested in joining the Board.

**Treasurer:** There is approximately \$7500.00 in WQ's treasury. Karynn reported a loss of \$958.00 for the last year. The Board all agreed that the outstanding teachers (and what we pay them) more than makes up for a small loss in income.

**Philanthropy:** WQ donated \$650.00 to the Westside Food Bank at the end of 2019. Twenty-five larger quilts were given to Upward Bound and 12 small quilts to A Child's Dream.

**Website:** Photos from the Holiday Tea and Sew-in are on the website.

**Membership:** Membership remains around 80.

Meeting adjourned at 11:45.

The next Board Meeting will be on February 22 at 10:00 at Sally Wright's house.

Respectively submitted,

Terrie Dorio, Recording Secretary.



